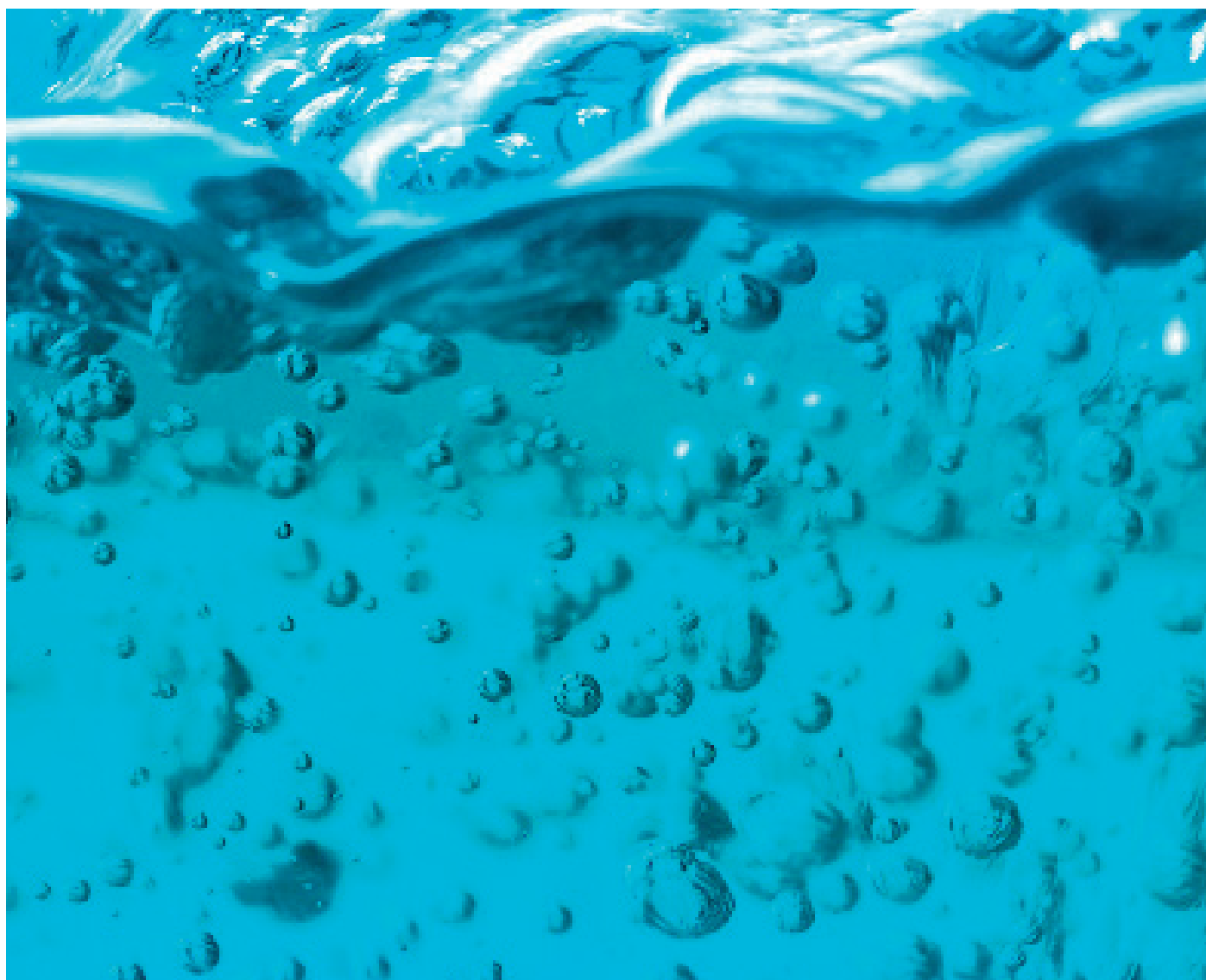


DISINFECTING SANITARY SYSTEMS



DISINFECTING SANITARY SYSTEMS

PORTINOX has developed a wide and complete range of stainless steel disinfecting sanitary equipment, specially meant for public environments.

The properties of stainless steel make it the material of choice for dispensation of hand sanitizers, where guaranteeing the hygiene is imperative.

PORTINOX Disinfecting Sanitary Systems are functional, easy to install, durable, secure, hygienic and easy to clean, with an attractive and ergonomic design as well as a high resistance to any kind of requirements:

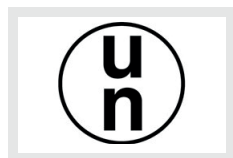
- Vandal Resistant / Anti-Theft
- User friendly & children-proof
- Freestanding and mobile
- Quick and easy to install and maintain
- Designed to accommodate large capacity gel containers and compatible with a wide range of formats
- Easy to refill and/or replace the gel tanks
- Environmentally friendly, 100% recyclable stainless steel



APPROVALS / CERTIFICATIONS

PORTINOX offers customized products to meet most stringent requirements in full compliance with International Standards and Certifications:

- **UN Approval.** Regulation for the transport of dangerous goods.
- **CE Marking.** According to PED “Pressure Equipment Directive” 97/23/ECC for fluid categories 1 (dangerous) and 2 (non dangerous). EU-Regulation.
- **ASME.** Pressure Vessels for the US.
- **GMP Conformity.** Good Manufacturing Practices: Regulation for risk minimization during pharmaceutical production.
- **DOT:** Available on request.
- **PI Certification:** Gas cylinders in Europe.



APPLICATION AREAS

- SPORTS FACILITIES
- HEALTHCARE
- EDUCATION CENTRES
- LEISURE & CULTURE PLACES
- TERMINALS
- INDUSTRIES
- HOSPITALITY SECTOR
- COMMERCIAL CENTRES
- OTHER PUBLIC FACILITIES

COMPATIBLE WITH



MANUAL-DOSING SANITIZER WITH SECURITY-DEVICE

Mod. **CLEAN-TOWER**

CHILD-SECURITY-DEVICE

Safety device, avoids direct drinking. USER FRIENDLY

RELIABLE PUSH DISPENSER

Large push surface

SAFETY DRIP BOWL

Safet Hand mirror polished safety drip bowl

THEFT PREVENTION & VANDAL-RESISTANT

Equipped with TORX security screws

MAXIMUM HYGIENE & CLEANING-FRIENDLY

Rounded design made of stainless steel AISI 304 that limits bacterial proliferation

COMPATIBLE WITH MEDIUM & LARGE GEL CONTAINERS

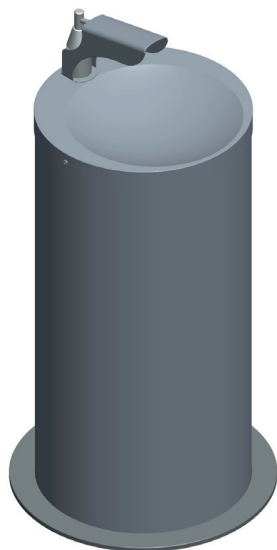
From 5L up to 25L and compatible with a wide range of formats

BIN

Optional Side Bin(s) on request



MANUAL-DOSING SANITIZER WITH SECURITY-DEVICE



Mod. **CLEAN-TOWER**

DESCRIPTION

FREESTANDING SANITIZER & DISINFECTION DISPENSER WITH SECURITY-DEVICE

Vandal-resistant large capacity hydro-alcoholic gel dispenser made of stainless steel AISI 304 (1.4301), brushed finish. Equipped with a push-type **Child Protection Device (USP)**. Designed especially for heavily frequented public indoor areas, where functionality, maximum endurance, safety, hygiene and stylish design are required. Supplied with a pressed high mirror-polish drip bowl, fitted to a satin finish pedestal by anti-theft TORX security screws. Integrated floor-mounting ring of 3mm thick stainless steel AISI 304 (1.4301). Capacity for mounting large hydro-alcoholic gel canisters or THIELMANN cleaning vessels (from 5L up to 25L). Compatibility with a wide range of formats. Gel containers are easy and quick to replace/refill. Displays clearly visible hygiene recommendations.

Overall size: Ø320/Ø420x800/910mm



Mod. **CLEAN-TOWER-WM**

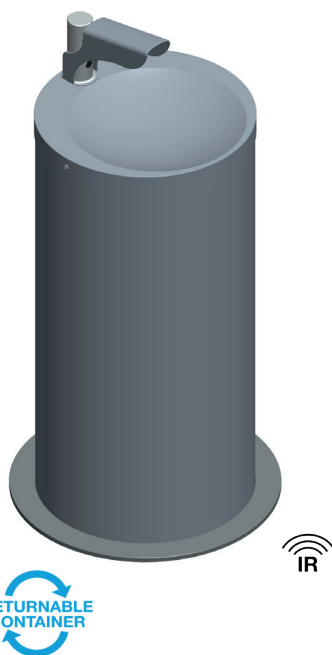
DESCRIPTION

WALL/FLOOR MOUNTED SANITIZER & DISINFECTION DISPENSER WITH SECURITY-DEVICE

Vandal-resistant large capacity wall/floor mounted hydro alcoholic gel dispenser made of stainless steel AISI 304 (1.4301), brushed finish. Equipped with a push-type **Child Protection Device (USP)**. Designed especially for heavily frequented public indoor areas, where functionality, maximum endurance, safety, hygiene and stylish design are required. Supplied with a pressed high mirror-polish drip bowl, fitted to a satin finish pedestal by anti-theft TORX security screws. Front access panel with security lock. Three height-adjustable legs for perfect alignment even on uneven floors. Capacity for mounting large hydro-alcoholic gel canisters or THIELMANN cleaning vessels (from 5L up to 25L). Compatibility with a wide range of formats. Gel containers are easy and quick to replace/refill. It clearly displays the hygiene recommendations.

Overall size: 350x360x910/1010mm

SENSOR-CONTROLLED SANITIZER WITH SECURITY-DEVICE



Mod. **SENSO-CLEAN-TOWER**

DESCRIPTION

FREESTANDING TOUCHLESS SANITIZER & DISINFECTION DISPENSER WITH SECURITY-DEVICE

Vandal-resistant large capacity hydro-alcoholic gel dispenser made of stainless steel AISI 304 (1.4301), brushed finish. Equipped with a sensor-type **Child Protection Device (USP)**, operated with battery or mains power supply. Designed especially for heavily frequented public indoor areas, where functionality, maximum endurance, safety, hygiene and stylish design are required. Supplied with a pressed high mirror-polish drip bowl, fitted to a satin finish pedestal by anti-theft TORX security screws. Integrated floor-mounting ring of 3mm thick stainless steel AISI 304 (1.4301). Capacity for mounting large hydro-alcoholic gel canisters or THIELMANN cleaning vessels (from 5L up to 25L). Compatibility with a wide range of formats. Gel containers are easy and quick to replace/refill. It clearly displays the hygiene recommendations.

Overall size: Ø320/Ø420x800/910mm



Mod. **SENSO-CLEAN-TOWER-WM**

DESCRIPTION

WALL/FLOOR MOUNTED TOUCHLESS SANITIZER & DISINFECTION DISPENSER WITH SECURITY-DEVICE

Vandal resistant large capacity wall/floor mounted hydro-alcoholic gel dispenser made of stainless steel AISI 304 (1.4301), brushed finish. . Equipped with a sensor-type **Child Protection Device (USP)**, operated with battery or mains power supply. Designed especially for heavily frequented public indoor areas, where functionality, maximum endurance, safety, hygiene and stylish design are required. Supplied with a pressed high mirror-polish drip bowl, fitted to a satin finish pedestal by anti-theft TORX security screws. Front access panel with security lock. Three height-adjustable legs for perfect alignment even on uneven floors. Capacity for mounting large hydro-alcoholic gel canisters or THIELMANN cleaning vessels (from 5L up to 25L). Compatibility with a wide range of formats. Gel containers are easy and quick to replace/refill. It clearly displays the hygiene recommendations.

Overall size: 350x360x910/1010mm

SENSOR-CONTROLLED SANITIZER WITH SECURITY-DEVICE

SUPPLIED WITH CHILD- SECURITY-DEVICE

Safety device, avoids direct
drinking. USER FRIENDLY



SENSOR OPERATED
SANITIZER SPOUT

INSTRUCTION
GUIDELINES

HYDROALCOHOLIC
GEL CONTAINER
INSIDE



3 MM THICK BASE
PLATE

Mod. **SENSO-SANITIZER-STATION**

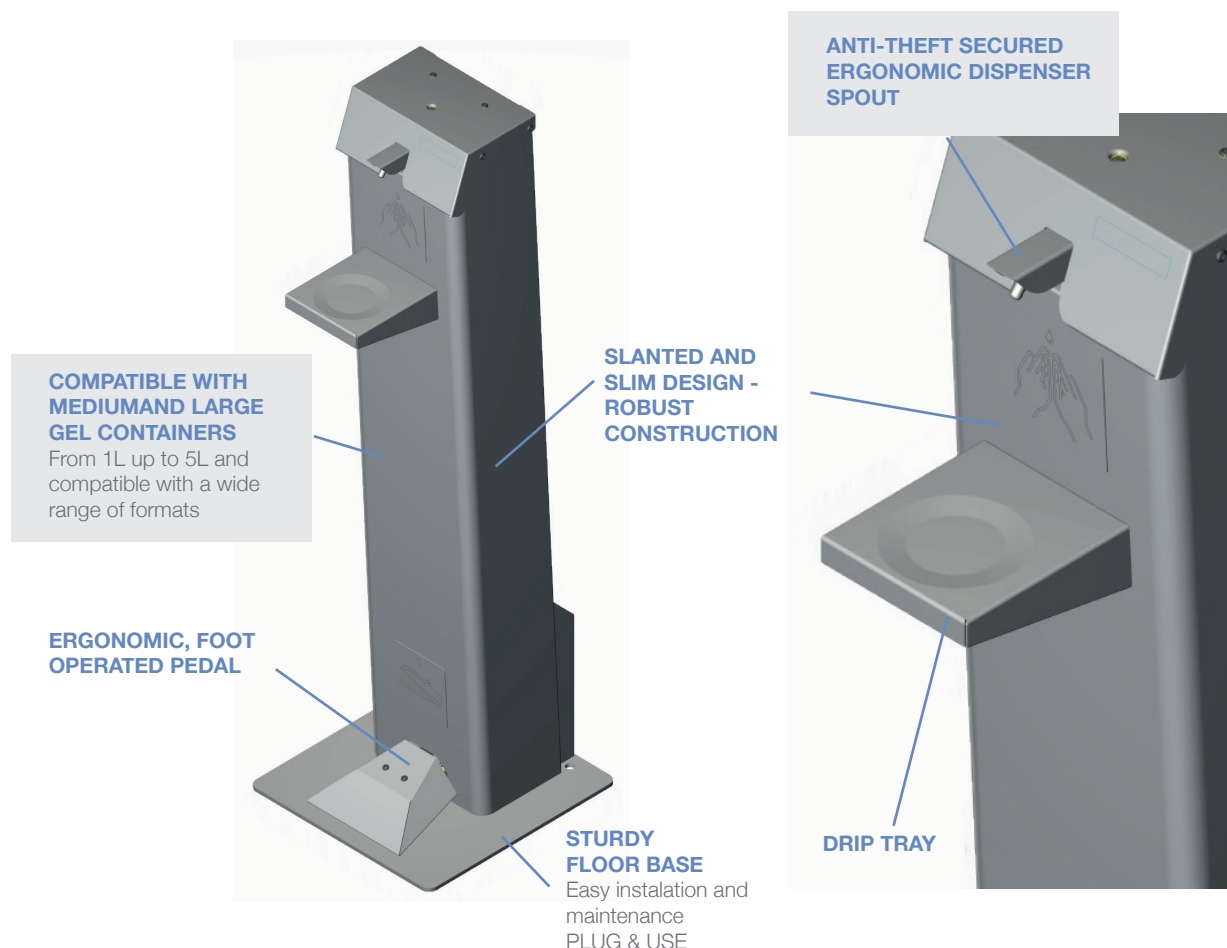
DESCRIPTION

FREESTANDING TOUCHLESS SANITIZER & DISINFECTION STATION WITH SECURITY-DEVICE

Vandal resistant and large capacity hydro-alcoholic gel dispenser made of stainless steel AISI 304 (1.4301), brushed finish. Equipped with a battery or mains operated sensor-type **Child Protection Device (USP)**. Designed especially for heavily frequented public indoor and outdoor areas, where functionality, maximum endurance, safety, hygiene and attractive design are required. Supplied with a pressed washbasins with water safe shapes, fitted to a satin finish pedestal by TORX security screws. Front access panel with security lock. Capacity for mounting large hydro-alcoholic gel canisters or THIELMANN cleaning vessels (from 5L up to 25L). Compatibility with a wide range of formats. Gel containers are easy and quick to replace/refill. It clearly displays the hygiene recommendations.

Overall size: 500x200x850mm

PEDAL-DOSING SANITIZER



Mod. **FOOT-TOWER**

DESCRIPTION

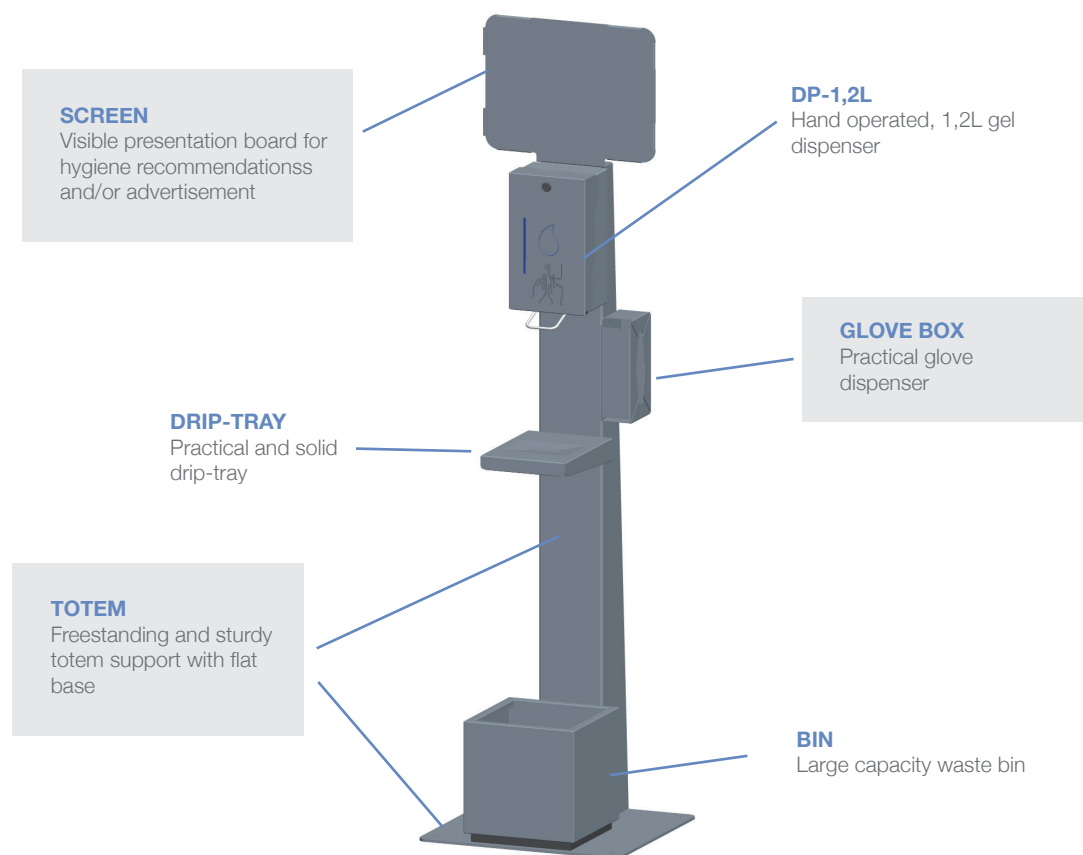
FOOT OPERATED – FREESTANDING SANITIZER & DISINFECTION DISPENSER

Freestanding, vandal resistant and solid foot operated hydro-alcoholic gel dispenser made of stainless steel AISI 304 (1.4301), brushed finish. Designed especially for heavily frequented public indoor and outdoor areas, where functionality, maximum endurance, safety and hygiene is required. Equipped with a foot pedal, fitted between the sturdy pedestal and the 3mm thick fixing base plate. Supplied with a user-friendly, slightly slanted pedestal with integrated drip tray and a theft-protected ergonomic dispenser spout. Capacity for mounting large hydro-alcoholic gel canisters up to 5L. Compatibility with a wide range of formats. Gel containers are easy and quick to replace/refill. It clearly displays the hygiene recommendations.

Pedestal base size: 350x340mm

Overall size: 350x340x1115mm

HYGIENIC TOTEM STATION



HYGIENIC TOTEM COMPOSITION

Mod. **TOTEM + BIN + DRIP TRAY + GLOVE BOX + DP-1,2L + SCREEN**

DESCRIPTION

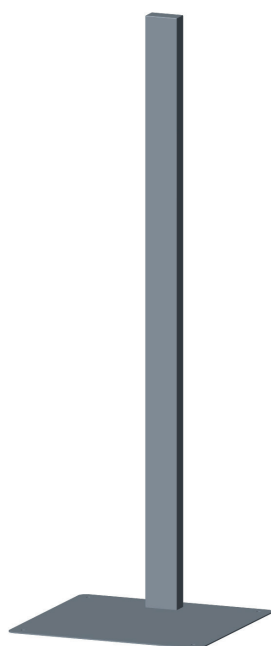
Freestanding, robust and user-friendly totem support with flat base plate, large capacity bin, drip tray, glove box and hydro-alcoholic gel dispenser made of stainless steel AISI 304 (1.4301), brushed finish. Guaranteed stability and a long service life. Suitable for low, medium and high traffic receptions areas, store entrances, building entry points, lift lobbies, corridors, foyers, offices and places where it is not possible or recommendable to fix a dispenser to the wall. Quick and easy setup.

- **Waste bin:** Large capacity waste bin.
- **Drip tray:** Practical and robust sanitizer collector.
- **Glove dispenser:** Practical glove holder.
- **Hydro-alcoholic gel dispenser capacity:** 1,2L
- **Sturdy display board:** Ready for displaying your hygiene recommendations and/or advertisement on a visible place.

Totem base plate size: 450x420mm

Overall size: 450x400x1.820mm

TOTEM ACCESSORY COLLECTION



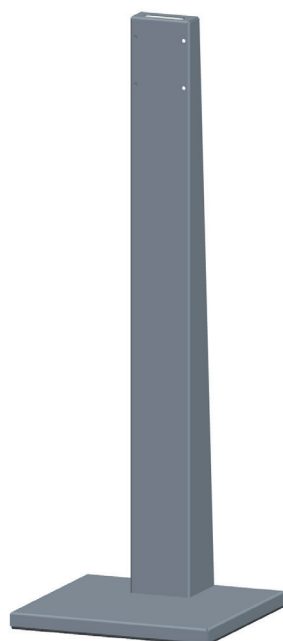
Mod. **TOTEM**

DESCRIPTION

Freestanding, solid and user-friendly totem support with flat base plate made of stainless steel AISI 304 (1.4301), brushed finish. Guaranteed stability and a long service life. Suitable for low, medium and high traffic receptions areas, store entrances, building entry points, lift lobbies, corridors, foyers, offices and places where it is not possible or recommendable to fix a dispenser to the wall. Designed to easily fit our extensive "TOTEM ACCESSORY COLLECTION". The wide range of composition makes it highly configurable, which gives you the possibility to individually optimize the product to your own specific needs. Quick and easy setup.

Totem base plate size: 450x420mm

Overall size: 450x400x1.500mm



Mod. **PREMIUM-TOTEM**

DESCRIPTION

Freestanding, solid and user-friendly totem support with 25mm height relief base plate made of stainless steel AISI 304 (1.4301), brushed finish. Ensures a good stability and a long service life ideal for low, medium and high traffic receptions areas, store entrance, building entry points, lift lobbies, corridors, foyers, offices and places where wall mounted dispensers is not desired or possible. The mobile station can be quickly placed wherever it is needed. Designed to easily accommodate our extensive "TOTEM ACCESSORY COLLECTION". The wide range of composition makes it highly configurable and gives the possibility to optimize your product individually, satisfying your specific needs. Guaranteed stability and a long service life. Suitable for low, medium and high traffic receptions areas, store entrances, building entry points, lift lobbies, corridors, foyers, offices and places where it is not possible or recommendable to fix a dispenser to the wall. Designed to easily fit our extensive "TOTEM ACCESSORY COLLECTION". The wide range of composition makes it highly configurable, which gives you the possibility to individually optimize the product to your own specific needs. Quick and easy setup.

Totem base plate size: 450x420mm

Overall size: 450x400x1.500mm

TOTEM ACCESSORY COLLECTION



Mod. **SCREEN**

DESCRIPTION

Sturdy display screen (DIN-A3) for mounting on totem support made of stainless steel AISI 304 (1.4301), brushed finish. Ready for displaying your hygiene recommendations and/or advertisement on a visible place. Designed especially for heavily frequented public indoor and outdoor areas, where functionality, maximum endurance, safety and hygiene are required.

Overall size: 420x320mm

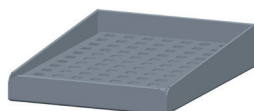


Mod. **DRIP-TRAY**

DESCRIPTION

Robust totem drip tray made of stainless steel AISI 304 (1.4301), brushed finish. Designed especially for heavily frequented public indoor and outdoor areas, where functionality, maximum endurance, safety and hygiene are required.

Overall size: 200x250mm



Mod. **DRIP-TRAY-XL**

DESCRIPTION

Large capacity and robust totem drip tray with grid made of stainless steel AISI 304 (1.4301), brushed finish. Designed especially for heavily frequented public indoor and outdoor areas, where functionality, maximum endurance, safety and hygiene are required.

Overall size: 200x250mm

TOTEM ACCESSORY COLLECTION



Mod. **PULL-TOWEL**

DESCRIPTION

Centre pull towel paper roll dispenser for wall and mounting on totem support made of stainless steel AISI 304 (1.4301), brushed finish. With front opening and security lock. Designed especially for heavily frequented public indoor and outdoor areas, where functionality, maximum endurance, safety and hygiene are required.

Overall size: 240x210x300mm

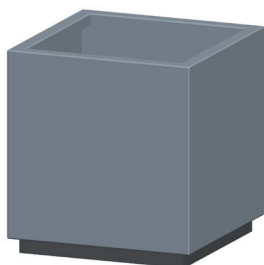


Mod. **GLOVE-BOX**

DESCRIPTION

Practical glove dispenser box for mounting on totem support made of stainless steel AISI 304 (1.4301), brushed finish. With front opening. Designed especially for heavily frequented public indoor and outdoor areas, where functionality, maximum endurance, safety and hygiene are required.

Overall size: 250x130x70mm



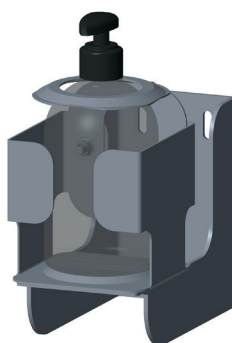
Mod. **BIN**

DESCRIPTION

Sturdy waste bin for mounting on totem support made of stainless steel AISI 304 (1.4301), brushed finish. With front opening. Designed especially for heavily frequented public indoor and outdoor areas, where functionality, maximum endurance, safety and hygiene are required.

Capacity: 20L

TOTEM ACCESSORY COLLECTION



Mod. DP-0,5L

DESCRIPTION

TOTEM MOUNTED SANITIZER & DISINFECTION SUPPORT

The new wall hung and totem mounting disinfection holder made of stainless steel AISI 304 (1.4301), brushed finish. Guaranteed stability and a long service life. Suitable for receptions areas, store entrances, building entry points, lift lobbies, offices and other public places. Conventional disinfectant or soap bottles from 0,5L up to 0,8L with hand pump can be mounted to the anti-theft bottle support. Compatibility with a wide range of formats. Containers are easy and quick to replace/refill.

Overall size: 90x175x150mm



Mod. DP-0,5-1L

DESCRIPTION

Vandal resistant push operated liquid soap and hydro-alcoholic gel dispenser for wall or for mounting on Totem. Made of stainless steel AISI 304 (1.4301), brushed finish. Suitable for high traffic facilities and for public use. Equipped with a 1L inner container suitable for hydro-alcoholic gel. Easy and quick to refill from the top by security lock and key. Cleaning friendly rounded design.



Mod. DP-1,2L

DESCRIPTION

Vandal resistant push operated liquid soap and hydro-alcoholic gel dispenser for wall or for mounting on Totem. Made of stainless steel AISI 304 (1.4301), brushed finish. Suitable for high traffic facilities and for public use. Equipped with a 1,2L inner container suitable for hydro-alcoholic gel. Easy and quick to refill from the top by security lock and key.

Capacity of 1,2L

Overall size: 180x140x280mm

TOTEM ACCESSORY COLLECTION



Mod. **DP-1L**

DESCRIPTION

Vandal resistant push operated liquid soap and hydro-alcoholic gel dispenser for wall or for mounting on Totem. Made of stainless steel AISI 304 (1.4301), brushed finish. Suitable for high traffic facilities and for public use. Equipped with an inner container suitable for liquid soap as well as disinfectant with a maximum of 75% alcohol. Polycarbonate level indicator. Easy and quick to refill from the top by security lock and key.

Capacity: 1L

Overall size: 100x120x245/290mm



Mod. **DP-SENSO-0,8L**

DESCRIPTION

Sensor operated wall or Totem-mounted hydro-alcoholic gel and liquid disinfection dispenser made of stainless steel AISI 304 (1.4301), brushed finish. Equipped with an inner plastic container, easy to replace or refill. Reacts to the hands in active range by start of single dose of disinfection (adjustable dosage time in range 1,3 - 13 s), standard 2,6 s. Designed especially for heavily frequented public indoor and outdoor areas, where functionality, maximum endurance, safety and hygiene is required.

Capacity of 0,8L

Overall size: 180x140x280mm



Mod. **DP-SENSO-5L**

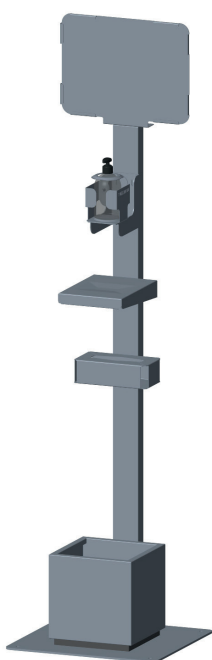
DESCRIPTION

Sensor operated wall or Totem-mounted hydro-alcoholic gel and liquid disinfection dispenser made of stainless steel AISI 304 (1.4301), brushed finish. Equipped with an inner plastic container, easy to replace or refill. Operated by hand movement in active range by start of single dose of disinfection (adjustable dosage time in range 1,3 - 13 s), standard 2,6 s. Designed especially for heavily frequented public indoor and outdoor areas, where functionality, maximum endurance, safety and hygiene is required.

Capacity: 5L

Overall size: 230x195x305mm

TOTEM COMPOSITION EXAMPLES

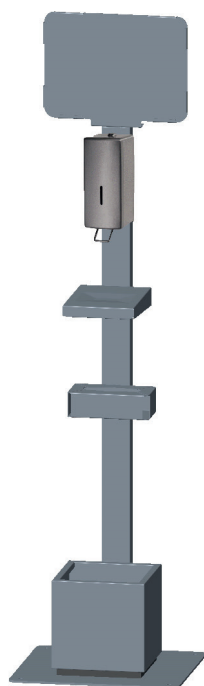


Mod. **TOTEM + BIN + DRIP-TRAY + GLOVE-BOX + DP-0,5L + SCREEN**

DESCRIPTION

Freestanding, robust and user-friendly totem support with flat base plate, large capacity bin, drip tray, glove box and dispenser holder made of stainless steel AISI 304 (1.4301), brushed finish. Ensures a good stability and a long service life ideal for low, medium and high traffic receptions areas, store entrance, building entry points, lift lobbies, corridors, foyers, offices and places where wall mounted dispensers is not desired or possible. Quick and easy setup.

- **Waste bin:** Large capacity waste bin.
- **Drip tray:** Practical and solid sanitizer drip tray.
- **Glove dispenser:** Practically glove holder.
- **Dispenser holder capacity:** 0,5L – 0,8L
- **Sturdy display board:** Ready for displaying your hygiene recommendations and/or advertisement on a visible place.



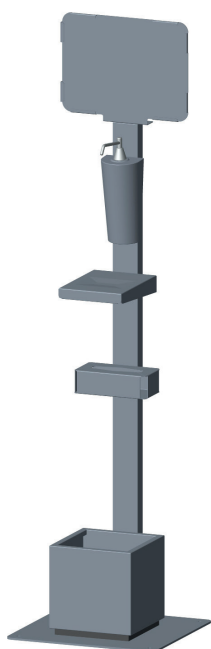
Mod. **MOD. TOTEM + BIN + GLOVE BOX + DRIP-TRAY + DP-1L + SCREEN**

DESCRIPTION

Freestanding, solid and user-friendly totem support with flat base plate, large capacity bin, drip tray, glove box and hydro-alcoholic gel dispenser made of stainless steel AISI 304 (1.4301), brushed finish. Ensures a good stability and a long service life ideal for low, medium and high traffic receptions areas, store entrance, building entry points, lift lobbies, corridors, foyers, offices and places where wall mounted dispensers is not desired or possible. Quick and easy setup.

- **Waste bin:** Large capacity waste bin.
- **Drip tray:** Practical and solid sanitizer collector.
- **Glove dispenser:** Practical glove holder.
- **Hydro-alcoholic gel dispenser capacity:** 1L.
- **Sturdy display board:** Ready for displaying your hygiene recommendations and/or advertisement on a visible place.

TOTEM COMPOSITION EXAMPLES

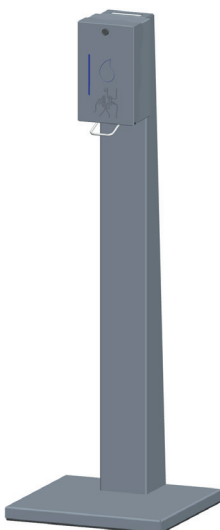


Mod. **TOTEM + BIN + GLOVE BOX + DRIP-TRAY + DP-0,5-1L + SCREEN**

DESCRIPTION

Freestanding, solid and user-friendly totem support with flat base plate, large capacity bin, drip tray, glove box and hydro-alcoholic gel dispenser made of stainless steel AISI 304 (1.4301), brushed finish. Ensures a good stability and a long service life ideal for low, medium and high traffic receptions areas, store entrance, building entry points, lift lobbies, corridors, foyers, offices and places where wall mounted dispensers is not desired or possible. Quick and easy setup.

- **Waste bin:** Large capacity waste bin.
- **Drip tray:** Practical and solid sanitizer collector.
- **Glove dispenser:** Practical glove holder.
- **Hydro-alcoholic gel dispenser capacity:** 0,5 - 1L.
- **Sturdy display board:** Ready for displaying your hygiene recommendations and/or advertisement on a visible place.



Mod. **PREMIUM TOTEM + DP-1,2L**

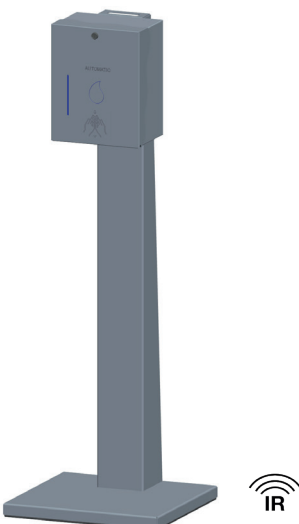
DESCRIPTION

Freestanding, robust and user-friendly totem support with 20mm height relief base plate and hydro-alcoholic gel dispenser made of stainless steel AISI 304 (1.4301), brushed finish. Guaranteed stability and a long service life ideal for low, medium and high traffic receptions areas, store entrance, building entry points, lift lobbies, corridors, foyers, offices and places where wall mounted dispensers is not desired or possible. Quick and easy setup.

Hydro-alcoholic gel dispenser capacity: 1,2L

Base plate size: 450x420x25mm

Overall size: 450x400x1.525mm



Mod. **PREMIUM TOTEM + DP-SENSO-5L**

DESCRIPTION

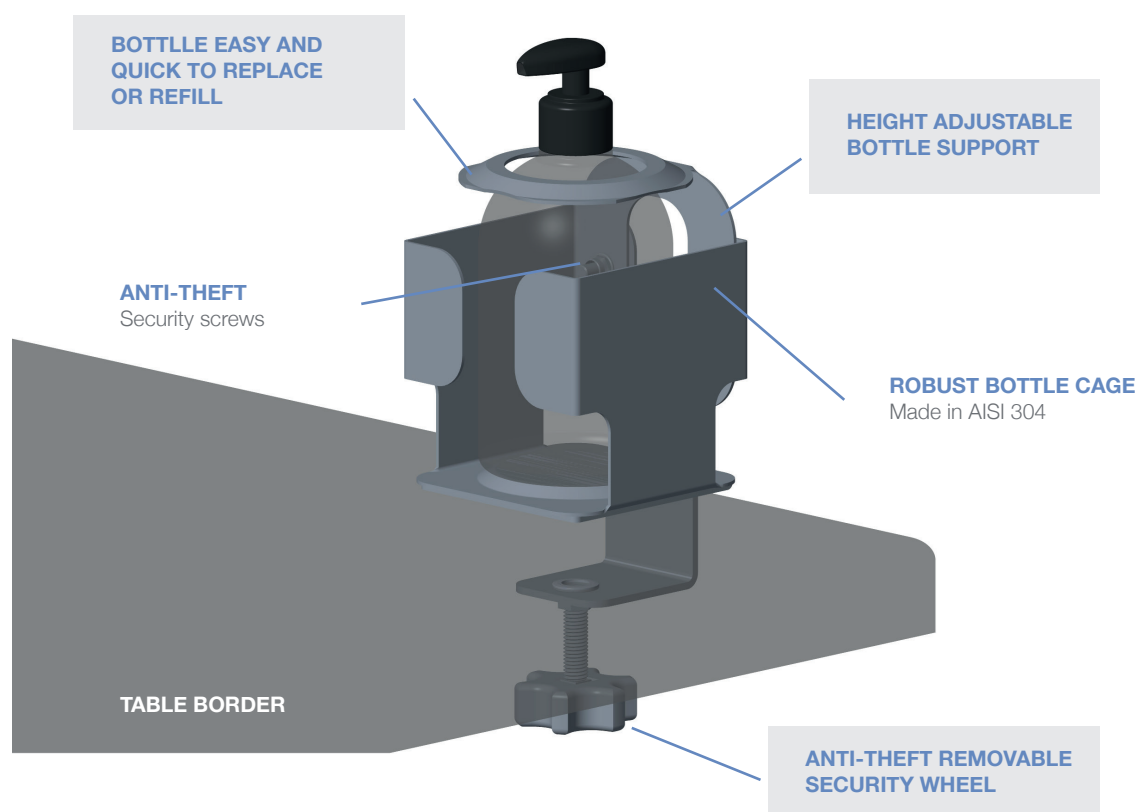
Freestanding, robust and user-friendly totem support with 20mm height relief base plate and large capacity hydro-alcoholic gel dispenser made of stainless steel AISI 304 (1.4301), brushed finish. Ensures a good stability and a long service life ideal for low, medium and high traffic receptions areas, store entrance, building entry points, lift lobbies, corridors, foyers, offices and places where wall mounted dispensers is not desired or possible. Quick and easy setup.

Touchless hydro-alcoholic gel dispenser capacity: 5L

Base plate size: 450x420x25mm

Overall size: 450x400x1.525mm

SANITIZER & DISINFECTION HOLDER



Mod. **TABLE SANITIZER HOLDER**

DESCRIPTION

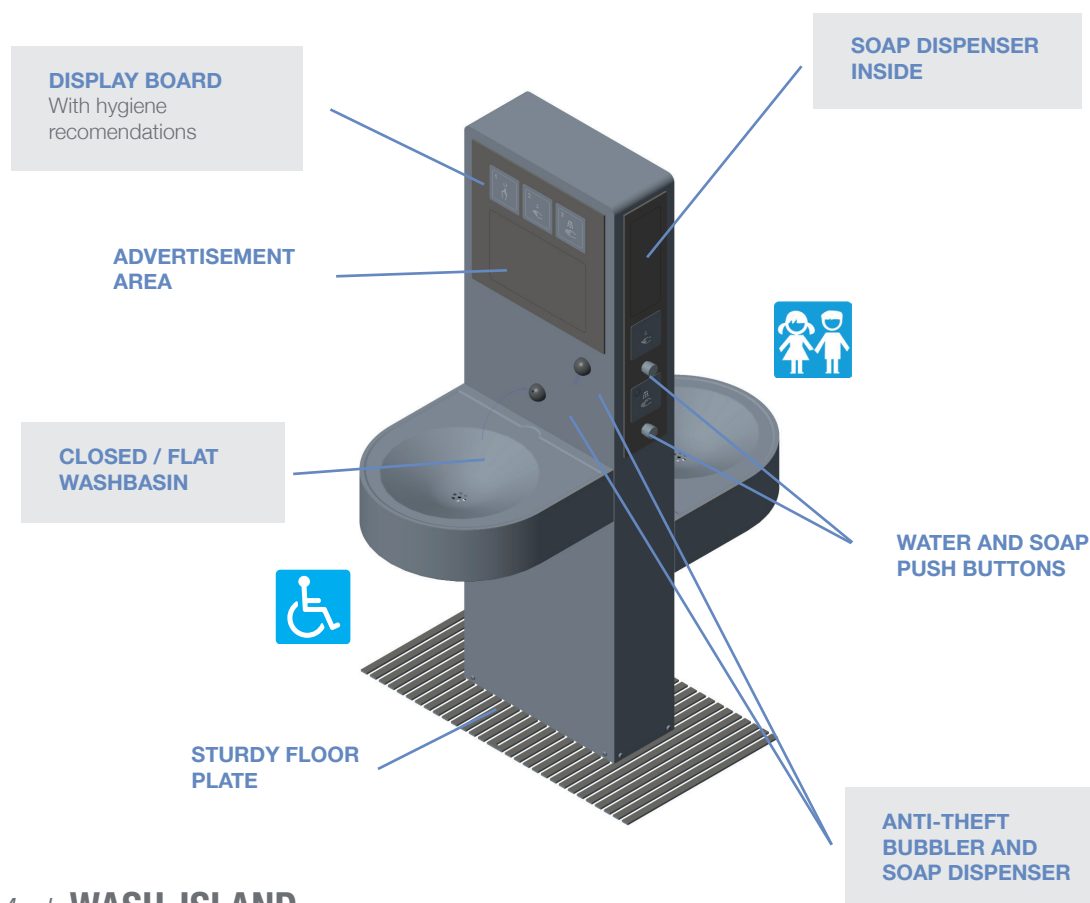
ANTI-THEFT TABLE SANITIZER & DISINFECTION HOLDER

Innovative anti-theft table holder with security device. Made of stainless steel AISI 304 (1.4301), brushed finish. It impresses with its simplicity, practicality and robust construction. Ideal for low, medium and high traffic terraces, rooftop restaurants, tapas bars, coffee shops, caterings, canteens and all indoor and outdoor HORECA and Commercial applications. Conventional disinfectant bottles from 0,5L up to 0,8L with hand pump can be mount on the table sanitizer holder. Compatibility with a wide range of bottle formats. The portable device can be quickly fitted to nearly every table edge by a secure fastening wheel mechanism. Bottles are easy and quick to replace or refill.

For maximum table thickness: 40mm

Overall size: 100x100x150mm

WASH BASINS



Mod. **WASH-ISLAND**

DESCRIPTION

A stylish, vandal-resistant and multifunctional hand washing station made of stainless steel AISI 304 (1.4301). Designed especially to provide handwashing capabilities in places, which were normally not equipped for it. Water inlet and water outlet are the only installation requirements. Can be swiftly set up anywhere clean hands are needed, indoor or outdoor. Withstand intensive use in busy environments such as in parks, squares, beach areas, malls and shopping centres, rest areas and other public spaces. Can be simultaneously used by two users. In compliance with existing hygiene regulations and contact precaution protocols. Supplied with vandal-proof water and soap push controls and two small washbasins, installed at different heights, which makes it suitable for children and disabled users. Fitted to a satin finish pedestal accessible through an inspection door on the front by anti-theft TORX security screws. Displays clearly visible hygiene recommendations.

Overall size: 500x200x1600/1900 mm

WASH BASINS



Mod. **LVP**

DESCRIPTION

FLOOR STANDING, FOOT OPERATED HAND WASH BASIN

It fully complies with the current European legislation. Fully made of stainless steel AISI-304 (1.4301). Pressed bowl with work top and overflow hole. CE marked. Complies with EN 133110.

- **LVP-040** Tap with one water inlet 500x450x850 mm
- **LVP-040-D** Tap with one water inlet + soap dispenser 500x450x850 mm
- **LVP-041** With thermostatic valve 500x450x850 mm
- **LVP-041-D** With thermostatic valve + soap dispenser 500x450x850 mm
- **LVP-042** Electronic control 500x450x850 mm
- **LVP-042-D** Electronic control + soap dispenser 500x450x850 mm



Mod. **LVM**

DESCRIPTION

WALL MOUNTED AND KNEE OPERATED HAND WASH BASIN

Full compliance with current European legislation. Fully made of stainless steel AISI-304 (1.4301). Pressed bowl with work top and overflow hole. CE marked. Complies with EN 133110.

- **LVM-040** Tap with one water inlet 500x450x265 mm
- **LVM-040-D** Tap with one water inlet + soap dispenser 500x450x265 mm
- **LVM-041** With thermostatic valve 500x450x265 mm
- **LVM-041-D** With thermostatic valve + soap dispenser 500x450x265 mm
- **LVM-042** Electronic control 500x450x265 mm
- **LVM-042-D** Electronic control + soap dispenser 500x450x265 mm

THIELMANN PORTINOX SPAIN, S.A.

Ctra. de Pulianas, km. 6

ES18197 - Pulianas - Granada - SPAIN

Tel.: +34 958 406000

E-mail: sanitary@portinox.com

